

Aspen-Sopris Wildlife Habitat Improvement Project

2019 Prescribed Fires in the Crystal River Valley



Phil Nyland, USFS, 970-963-2266

Crystal River
Caucus,
May 2019



AVALANCHE CREEK PRESCRIBED FIRE

- April 18, 2019
- 360 acres burned
- Mountain shrub, pinyon-juniper, aspen, grass
- 32 personnel
- Ignited using drip torches



AVALANCHE CREEK PRESCRIBED FIRE



AVALANCHE CREEK PRESCRIBED FIRE



AVALANCHE CREEK PRESCRIBED FIRE

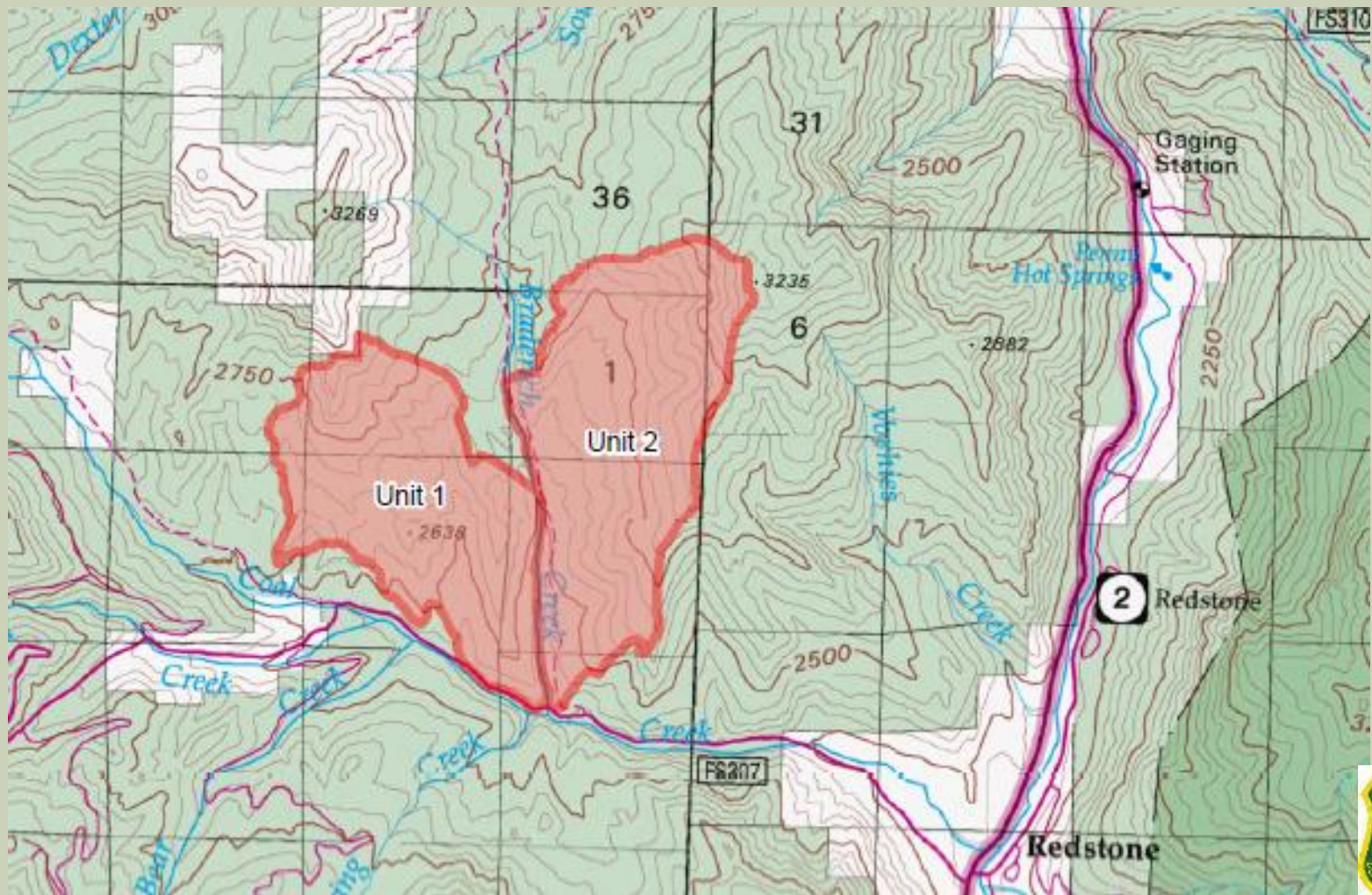


BRADERICH CREEK PRESCRIBED FIRE

- Planned May 2019
- 1200-2200 acres to be burned
- Mountain shrub, pinyon-juniper, aspen, grass
- To be ignited using aerial ignitions
 - As was done east of Filoha Meadows, April 4, 2016



BRADERICH CREEK PRESCRIBED FIRE



BRADERICH CREEK PRESCRIBED FIRE



BRADERICH CREEK PRESCRIBED FIRE



BRADERICH CREEK PRESCRIBED FIRE

- Planned burn event
- Weather and condition dependent
- Smoke visible
- Do Not Call 911
- Objectives: wildlife habitat, fuel reduction
- Multiple resource benefits including helps control spread of wildfire
- We notify people sensitive to smoke prior to burn
- Funding provided by CPW, RMEF, Pitkin County, you!

