



PITKIN COUNTY

AT A GLANCE

GEOGRAPHY ■ Covering 975 square miles, Pitkin County is located in the heart of the White River National Forest, surrounded by the spectacular peaks of the central Rocky Mountains. Pitkin County includes the communities of Aspen, Snowmass, Woody Creek, Old Snowmass, Meredith, Thomasville, Redstone and portions of the town of Basalt.

DEMOGRAPHICS ■ The total population of Pitkin County is 17,845 - an increase of 17% since 2000. The median age of residents is 43.4. The County is experiencing rapid increases in the population over the age of 65 with the number of persons over the age of 65 in 2045 expected to nearly double. ■ The median household income of Pitkin County residents is \$71,196, but the average wage per job is just \$49,460 — 14% lower than the State average. Even though the County has been very prosperous over the past 40 years, there are still significant community sustainability concerns including the affordability of housing, healthcare, transportation and an aging workforce.

ECONOMY ■ Best known for its four world-class ski resorts — Aspen Mountain, Aspen Highlands, Buttermilk and Snowmass, tourism is the mainstay of the local economy with arts, cultural and recreational events providing a year-round attraction.

TRANSPORTATION ■ Highway 82 is the only major roadway in Pitkin County leading into and out of Aspen via I 70 at Glenwood Springs to the north and over 12,000 foot Independence Pass to the south. Public transportation is provided by the Roaring Fork Transportation Authority (RFTA) and is easy to use throughout the valley. The Aspen/Pitkin County Airport is one of the busiest in the state, behind Denver International and Colorado Springs airports.

GOVERNMENT ■ With the county seat in Aspen, Colorado, Pitkin County was established in 1881 and became a home rule county in 1978. That means Pitkin County has the authority to establish the organization and structure of the county government via a document known as the Pitkin County Home Rule Charter. A five-member board of county commissioners and the staff are empowered to run the county operations in accordance with the charter. The Pitkin County Home Rule Charter is available online at www.pitkincounty.com.

HISTORY ■ The first silver prospectors in the Roaring Fork Valley arrived in the summer of 1879, set up camp and staked claims at the foot of Aspen Mountain. Before a permanent settlement could be established, news of a nearby Indian uprising prompted Colorado's Governor Frederick Pitkin to urge the settlers to flee back across the Continental Divide for their safety. Most of them did, and only a handful of settlers remained in the Roaring Fork Valley during the winters of 1879 and 1880. It wasn't until 1881 that Governor Pitkin signed legislation designating the boundaries of the new county, named Aspen as the county seat and appointed the first office holders in the county. Today, the county maintains 265 miles of roads and 24 bridges. There are 32 departments ranging from the Airport, Assessor and Animal Safety to Clerk and Recorder, Community Development and Emergency Dispatch/911.

PITKIN COUNTY ORGANIZATIONAL VALUES *Pitkin County embraces the following values to promote public trust and confidence in County government.*

STEWARDSHIP: We strive to leave our natural environment, community, public assets and organization in better condition than we found them for current and future generations. **Ethics:** We hold ourselves to high standards of honesty and dependability in the conduct of County business. **Excellence:** We are committed to providing quality services that are accessible, accurate and innovative to meet our community's needs. **Collaboration:** We work together as employees and with citizens and other government, non-profit and private sector organizations helping each other succeed in promoting and achieving the public's goals. **Open Communication:** We are committed to listening to our citizens and partners and to giving accurate and timely information. **Positive Work Environment:** We appreciate dedicated and knowledgeable employees and support their professional and personal growth.

www.pitkincounty.com

Photo: Jill Costigan, Pitkin County Detention Officer



REVENUES

PROPERTY TAX DISTRIBUTION

PITKIN COUNTY-21.8% SCHOOLS AND OTHER GOVERNMENT-78.2%



GENERAL SERVICES	7.6%
GENERAL FUND	5.5%
ROAD & BRIDGE	0.4%
HUMAN SERVICES	0.2%
TV/FM TRANSLATOR	0.6%
GID's	0.0%
AMBULANCE	0.9%

PITKIN COUNTY LIBRARY 3.1%
 HEALTHY COMMUNITY FUND 2.2%
 OPEN SPACE AND TRAILS 8.9%
 OTHER DISTRICTS 17.8%
 MUNICIPALITIES 8.2%
 FIRE PROTECTION 9.5%
 ASPEN VALLEY HOSPITAL 6.1%
 SCHOOLS 35.6%

SALES TAX RATES

ASPEN 2.4%,
 BASALT 3.0% AND
 SNOWMASS VILLAGE 3.5%
 LEVIED BY AND FOR
 THE EXCLUSIVE USE
 OF THE MUNICIPALITIES

ASPEN, BASALT,
 SNOWMASS
 VILLAGE
 1.14% MUNICIPAL SHARE
 OF COUNTY 2% SALES TAX

ROARING FORK TRANSPORTATION
 AUTHORITY (RFTA) 0.4%, 0.8% IN BASALT



PITKIN COUNTY 1.5%
 DISTRIBUTED TO RFTA, ASPEN &
 SNOWMASS FOR MASS TRANSIT

PITKIN COUNTY GENERAL
 FUND 0.86% SHARE OF THE
 COUNTY 2% SALES TAX

PITKIN COUNTY HEALTHY
 RIVERS AND STREAMS
 0.1%

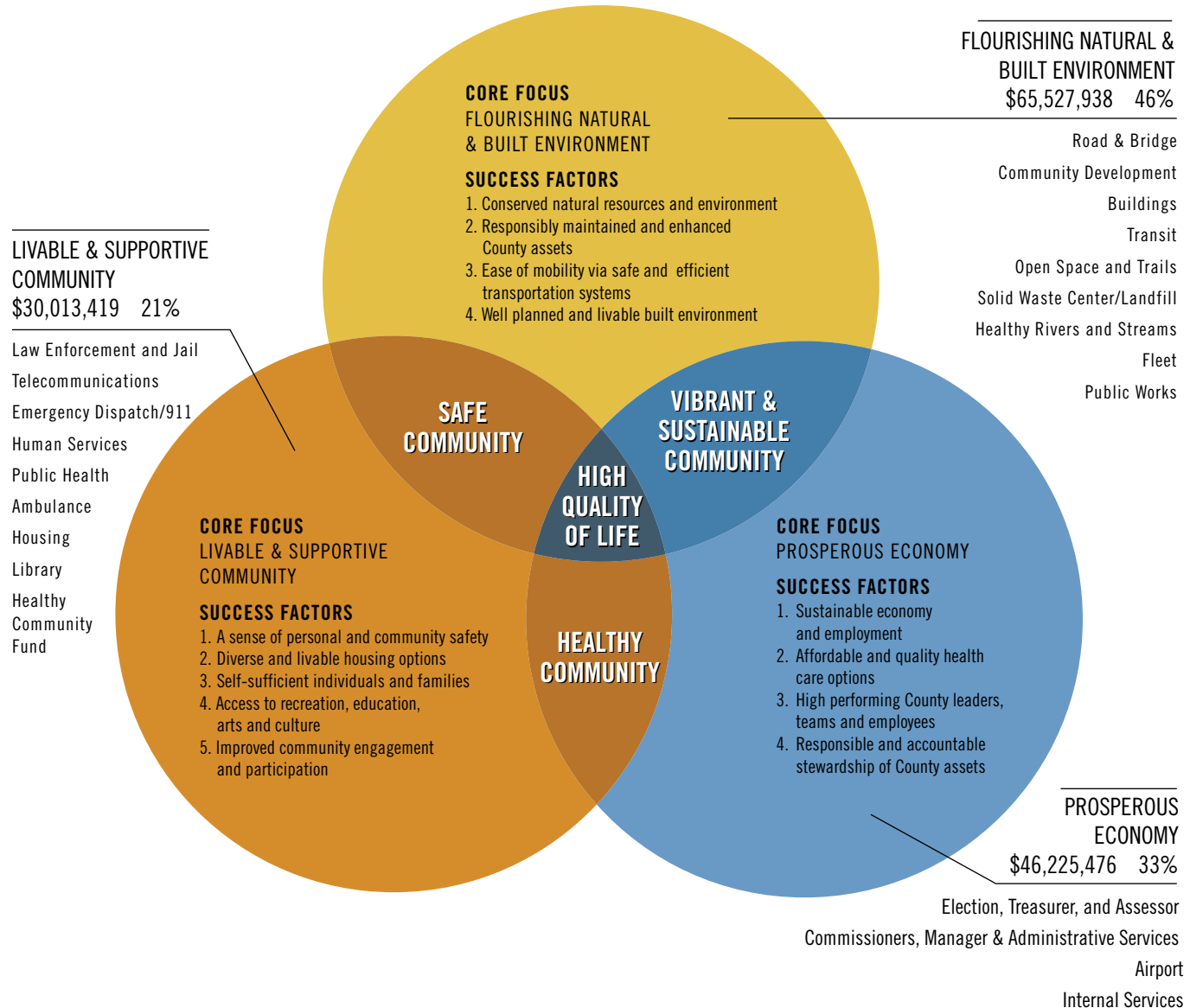
STATE OF COLORADO
 2.9%

TOTAL SALES TAX RATE: 9.3% ASPEN, 10.4% SNOWMASS VILLAGE, 6.9% UNINCORPORATED PITKIN COUNTY

EXPENDITURES

CORE FOCUS AREAS AND SUCCESS FACTORS

The diagram below shows the relationship between the three Core Focus Areas in achieving the County's mission and values.



ELECTED OFFICIALS

BOARD OF COUNTY COMMISSIONERS

- Staff: 5
- Budget: \$625,033
- Funding: General Fund

Regular public meetings are held the 2nd and 4th Wednesdays at 12:00 noon and weekly work sessions on Tuesdays at 10:00 am. All meetings are streamed online at www.pitkincounty.com. Televised on CGTV Channel 11.

- The 5-member Board of County Commissioners (BOCC) is the decision-making board for Pitkin County, reviewing and approving specific land-use issues such as special review, subdivision and planned unit development. They also review and approve county, district and authority service plans and budgets and act as liaison to statewide groups and commissions and other local governments. Commissioners represent specific residential districts in which they must reside during their terms but are elected at large.



Steve Child
970-948-3008



George Newman
970-618-9972



Greg Poschman
970-309-7997



Kelly McNicholas Kury
970-319-0219



Patti Clapper
970-379-3702

ASSESSOR

- Staff: 10
- Budget: \$1.2 million
- Funding: General Fund



Deb Bamsberger

- The Assessor's office values all real and personal property, including mobile homes, residential and commercial properties and agricultural land for property tax purposes. The Assessor determines the equitable value of all real and personal property based on the market. Properties are assessed as of January 1st each year. It is the job of the assessor to ensure that each taxpayer pays only his or her fair share of the taxes. The amounts of property taxes are set by the tax levying boards of the college, school, county, city, fire, metropolitan, water and sanitation districts.

CLERK & RECORDER

- Staff: 11.5
- Budget: \$1.5 million
- Funding: General Fund, revenues



Janice Vos Caudill

- The Pitkin County Clerk and Recorder provides motor vehicle titling and registration, real estate recording, marriage license issuance, voter registration and elections coordination with a focus on exceptional customer service and innovative technology that affords the following online opportunities: motor vehicle registration renewals at www.colorado.gov/renewplates; recording research and marriage license applications at www.pitkinclerk.org; voter information at www.pitkinvotes.org.

SHERIFF

- Staff: 62
- Budget: \$5.9 million
- Funding: General Fund



Joe DiSalvo

- The Pitkin County Sheriff's Office assists the community in the mutual pursuit of a peaceful, safe, and healthy environment. Education takes precedence over enforcement. In addition to general law enforcement the Sheriff's Office provides Animal Safety, Emergency Dispatch/911, the Jail, School Resource Officer, Neighborhood Watch, traffic safety on Highway 82 and all county roads, coordination of Mountain Rescue Aspen, Juvenile Investigations and support, and Emergency Management.

Photos facing page (left to right starting with background photo): Grand opening Pitkin County Administration and Sheriff's Office, 911 Communications dispatcher, local seniors at the Senior Ski Day on Aspen Mountain, Joe DiSalvo and former Deputy Dan Glidden transplanting roses at Veteran's Park, Deputy Sheriff Farrah Keannaina with a jail inmate



DEPARTMENTS

ADMINISTRATION/ ATTORNEY

- Staff: 18
- 2020 Budget: \$4,020,572
- Funding: General Fund

■ Pitkin County Administration includes the Board of County Commissioners (BOCC), County Attorney, and County Manager. The BOCC is the decision-making board for Pitkin County. The County Manager is the first point of contact for citizens and directs the activities of various County departments, prepares and recommends a multi-year budget, and is responsible for agenda management and meeting schedules for the BOCC. The County Attorney is appointed by the BOCC and provides legal advice to the BOCC and County departments and manages the Healthy Rivers Program.

AIRPORT

- Staff: 38
- 2020 Budget: \$16,505,993
- Funding: Airport Carriers and FAA Grants

■ The Aspen/Pitkin County Airport is located three miles from downtown Aspen, is less than a mile from the closest ski slope, and offers direct flights to several major U.S. cities including Denver, Salt Lake City, Chicago, Los Angeles, San Francisco, Houston, Dallas/Ft. Worth, Atlanta and Minneapolis/St. Paul. To help reduce its environmental impact the airport monitors noise and responds to noise concerns, only operating between 7 a.m. and 11 p.m. The airport budget is a self-sufficient 'enterprise fund' and does not rely on any county General Fund monies.

COMMUNITY DEVELOPMENT

- Staff: 24
- 2020 Budget: \$4,027,219
- Funding: Fees

■ The Pitkin County Community Development Department includes the Building and Planning and Zoning Departments. Together, these departments work to preserve, protect, and enhance natural and built environments by collaborating with the community in the creation and implementation of progressive development policies and standards. Community Development administers land use and building codes.

HUMAN SERVICES

- Staff: 21
- 2020 Budget: \$3,734,221
- Funding: General Fund, federal/state allocations

■ The Human Services Department envisions a community that is diverse, vibrant and healthy and where all people thrive. The Human Services programs — including Economic Assistance, Senior Services, Adult and Family Services, Community Grants, and Veteran's Services — are aimed at reducing poverty, strengthening families, protecting children and adults, promoting healthy aging and building a strong and accessible community safety net.

INTERNAL SERVICES

- Staff: 47
- 2020 Budget: \$9,367,414
- Facilities Capital: \$2.1 million
- Funding: General Fund

■ The Internal Services Department includes the offices of Finance, Treasurer, Procurement, Budgeting, Business Information and Technologies, Human Resources and Facilities. Under the direct supervision of the Deputy County Manager, these departments are committed to supporting all Pitkin County employees. Internal Services also serves as the owner's representative on new facility construction projects as approved by the Board of County Commissioners.

LANDFILL/ SOLID WASTE CENTER

- Staff: 14
- 2020 Budget:
Operations - \$4,595,912
Capital - \$9,727,850
- Funding: User fees

■ The Pitkin County Solid Waste Center preserves our environment and extends the life of the landfill by reducing waste through public education, recycling and reusing valuable commodities with innovative programs as well as providing safe and ethical disposal for all other materials.



DEPARTMENTS

LIBRARY

- Staff: 24
- 2020 Budget: \$4,279,644
- Funding: Property tax mill levy, and donations

■ The Pitkin County Library strives to inspire lifelong learning with an extensive collection of print and digital materials. The library provides the community access to meeting spaces, new technologies, and engaging programs. New features include the Library Lab, Evelyn R. Flug Children's Library, and the Dunaway Community Meeting room equipped for multimedia presentations. Detailed information online: www.pitcolib.org.

OPEN SPACE & TRAILS

- Staff: 14 + 8 seasonal
- 2020 Budget: \$6,609,642
- Funding: Property tax mill levy

■ The Pitkin County Open Space and Trails Department works to acquire, preserve, maintain and manage open space and trails for recreational, wildlife, agricultural, access, and scenic purposes. Open Space and Trails manages properties comprising over 20,000 acres. Lands protected by this citizen-initiated program include privately owned lands placed under conservation easements and county-owned parcels. The portfolio of conservation projects consists of agricultural properties, important wildlife habitat, scenic landscapes and recreational properties.

PUBLIC HEALTH

- Staff: 10
- 2020 Budget: \$2,053,695
- Funding: Public Health Fund, Healthy Community Fund and Federal/State Grants

■ The Public Health Department focuses on creating opportunities for all residents to achieve better health, beginning where we live, learn, work and play. The Department does this through cross-sectoral environmental, policy and systems-level initiatives, in partnership with community-based organizations, integrated health care providers, governments and citizens focused on population-based change. We also assure that evidence-based, quality Core Public Health Services are provided to prevent adverse outcomes, promoting and protecting the community's health. Services include: 1. Assessment and Planning, 2. Vital Records, 3. Disease Investigation and Control, 4. Prevention and Population Health Promotion, 5. Emergency Preparedness and Response, Environmental Health and 7. Governance and Communication.

PUBLIC WORKS

- Staff: 38
- 2020 Budget:
Operations - \$15,405,996
Capital - \$10,767,650
- Funding: General Fund, highway users' tax, USFS shared revenue, landfill tip fees, fleet services charges

■ Pitkin County Public Works encompasses five departments: The Solid Waste Center manages waste diversion, recycling, and the only landfill in the valley. Transportation/Engineering ensures state funds are available to meet the transportation needs of the upper Roaring Fork Valley and refurbishes county roads and bridges. Road and Bridge provides maintenance, like snow removal and drainage needs, to 264 miles of roads and 24 bridges. Fleet maintains over 160 vehicles and heavy equipment. Land Management ensures compliance with Colorado noxious weed legislation.

TREASURER / PUBLIC TRUSTEE

- Staff: 3
- 2020 Budget: \$327,748
- Funding: General Fund

■ The Treasurer and Public Trustee provides information about property taxation, collects and distributes property taxes to support Pitkin County and other public service entities, receives and deposits all other county revenue, responsibly invests county money, and provides a mechanism for property owners to secure mortgage loans by holding property in trust. The Treasurer also collaborates with Pitkin County staff and community members to develop the financial resources needed to achieve the Board of County Commissioners' and community's goals.

TELECOMMUNICATIONS

- Staff: 4
- 2020 Budget: \$2,336,107
- Funding: Property tax mill levy, service charges and grants

■ Pitkin County has a dedicated mill levy to support the TV/FM Translator and Broadband services. The Telecommunications Department maintains and operates communications systems across 10 mountaintop sites that spread throughout the Roaring Fork watershed. These sites support a statewide public safety radio system, TV/FM rebroadcasts and the future Broadband and cellular services. Some of the sites are over 50 years old, beyond their useful life and in a state of disrepair. The County is upgrading infrastructure throughout the system to enable 21st century wireless communications.

DIRECTORY

Administration & Sheriff's Office

530 East Main Street, Aspen

■ ADMINISTRATION	920-5200
■ ANIMAL SAFETY	920-5310
■ ASSESSOR	920-5160
■ ATTORNEY	920-5190
■ BOARD OF COUNTY COMMISSIONERS	920-5200
■ BUSINESS & IT	986-4502
■ CLERK & RECORDER	920-5180
■ COMMUNITY DEVELOPMENT	920-5526
■ COMMUNITY RELATIONS	920-5204
■ ELECTIONS	429-2732
■ FINANCE	920-5220
■ GIS MAPPING	920-5106
■ HUMAN RESOURCES	920-5240
■ OPEN SPACE & TRAILS	920-5232
■ SHERIFF'S OFFICE	920-5300
■ TREASURER	920-5170

Library

120 North Mill Street, Aspen

■ LIBRARY	429-1900
-----------	----------

Jail/Detention

506 East Main Street, Aspen

■ JAIL/DETENTION	920-5331
------------------	----------

Human Services

0405 Castle Creek Road

■ ADMINISTRATION	920-5235
■ ADULT & FAMILY SERVICES	429-2042
■ CHILD WELFARE HOTLINE	844-264-5437
■ COMMUNITY GRANTS	920-5179
■ ECONOMIC ASSISTANCE	920-5244
■ PUBLIC HEALTH	920-5070
■ VETERANS' SERVICES	429-6115

Senior Services/ Senior Center

0275 Castle Creek Road

■ ADMINISTRATION	920-5432
------------------	----------

Airport

233 East Airport Road, Aspen

■ OPERATIONS	920-5384
■ GUEST SERVICES	920-5380

Landfill & Recycling

32046 Highway 82

■ SOLID WASTE CENTER	429-2880
----------------------	----------

Public Works

76 Service Center Road, Aspen

■ ADMINISTRATION	920-5390
■ ROAD & BRIDGE	920-5046
■ FLEET	920-5393

Telecommunications

351 Southside Drive, Basalt

■ TV/FM BROADBAND	920-5395
-------------------	----------

