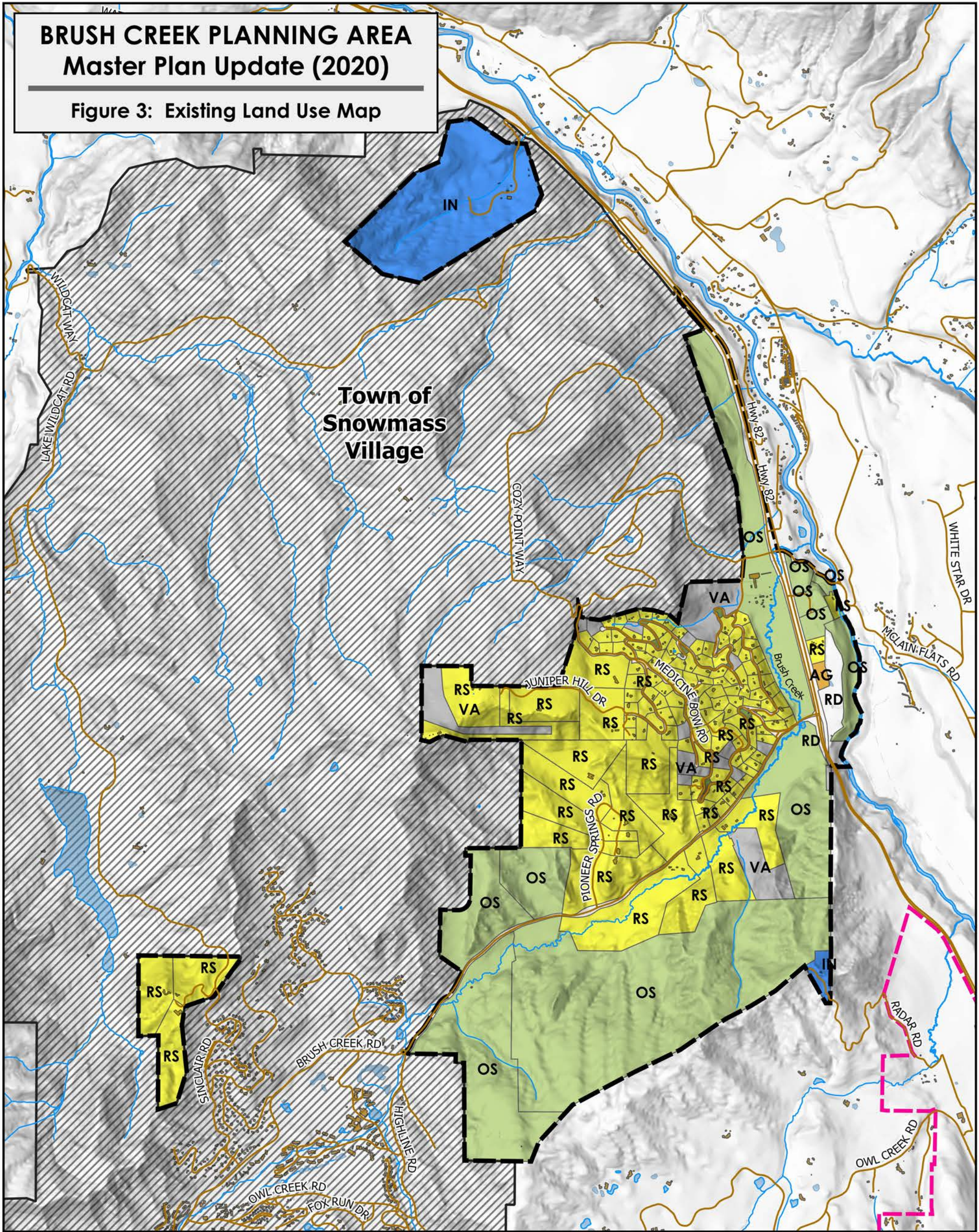


BRUSH CREEK PLANNING AREA Master Plan Update (2020)

Figure 3: Existing Land Use Map



LEGEND

Base Layers

- Planning Area
- Parcel Lines
- Water Bodies
- Aspen UGB
- Buildings
- County Roads
- Town Boundaries

Existing Land Use [189]

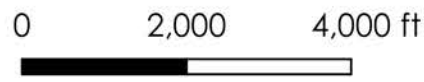
- SF-Residential [142]
- Institutional [2]
- Public OS [11]
- Private OS [11]
- Agriculture [1]
- ROW [3]
- Vacant [19]

Numbers in "[]" indicate parcels in each category.

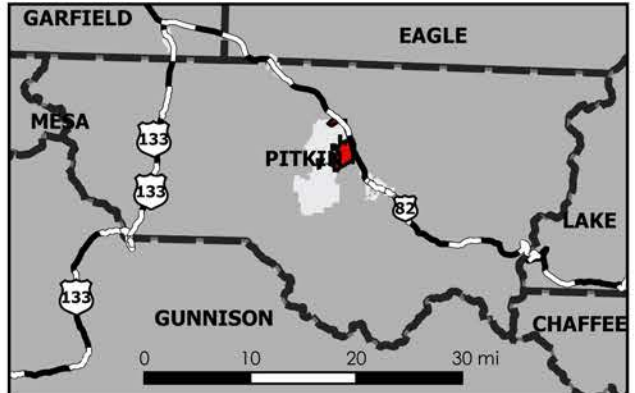
PITKIN COUNTY



Date: November 30, 2021



INDEX MAP



This map is a graphical representation of the features depicted and is not a legal representation. The accuracy may change depending on enlargement or