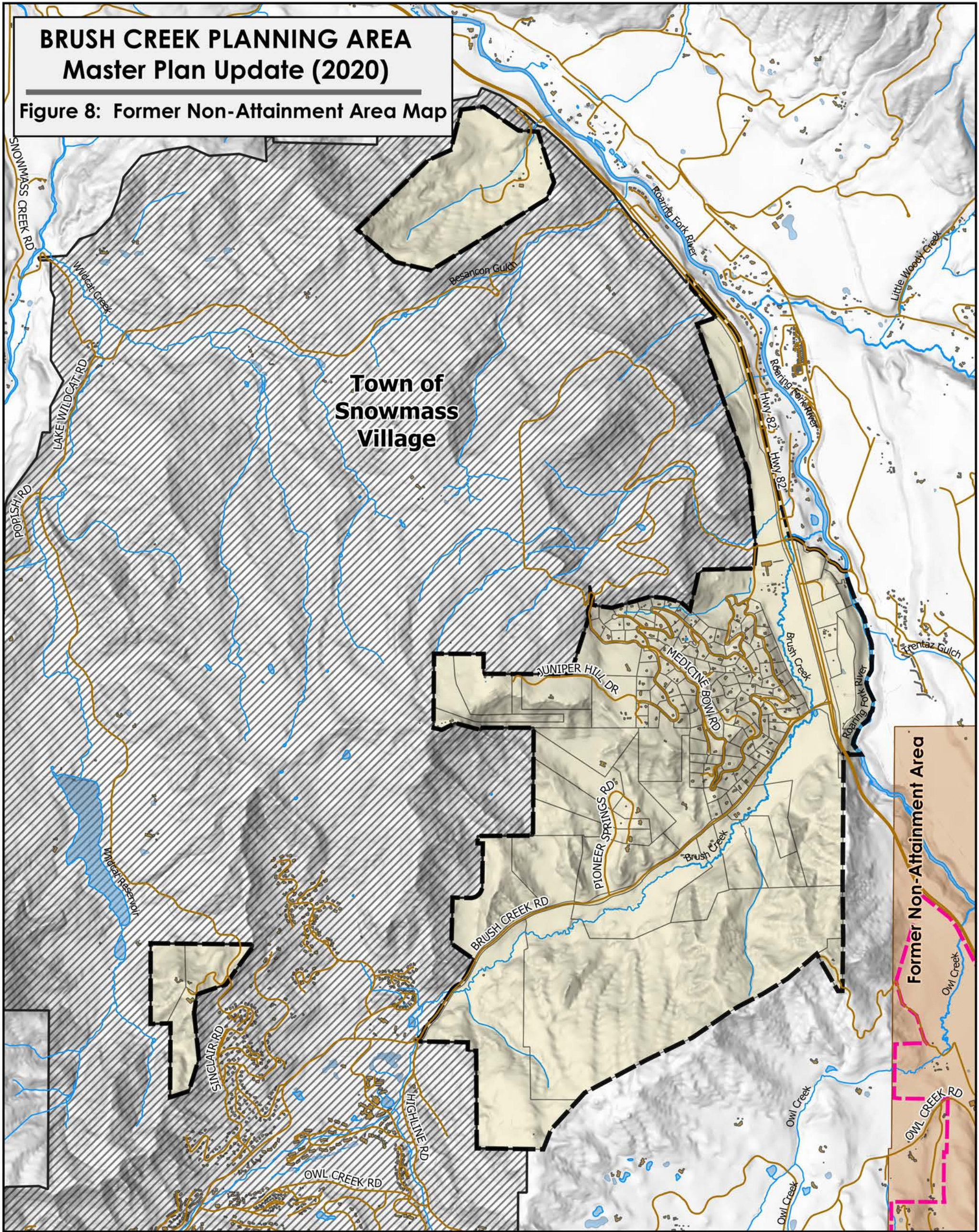


BRUSH CREEK PLANNING AREA Master Plan Update (2020)

Figure 8: Former Non-Attainment Area Map



LEGEND

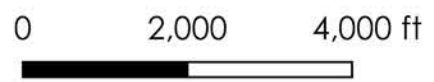
- Former Non-Attainment Area
- Base Layers**
- Planning Area
- Parcel Lines
- Water Bodies
- Aspen UGB
- Buildings
- County Roads
- Town Limits

Due to regular monitoring and the enforcement of regulations adopted to address fine particulate air pollution, air quality in the Aspen area was re-designated as meeting the Clean Air Act standards in 2002.

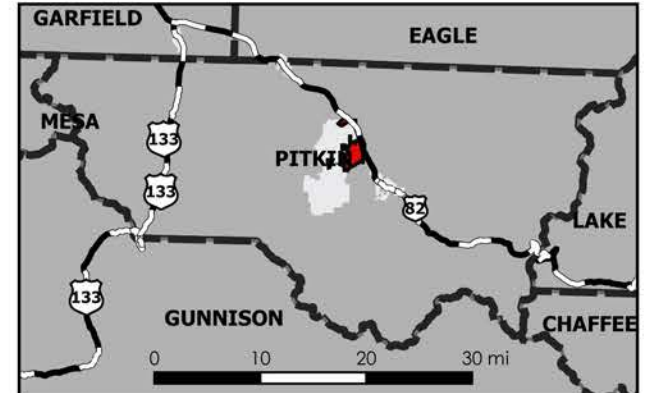
PITKIN COUNTY



Date: November 30, 2021



INDEX MAP



This map is a graphical representation of the features depicted and is not a legal representation. The accuracy may change depending on enlargement or