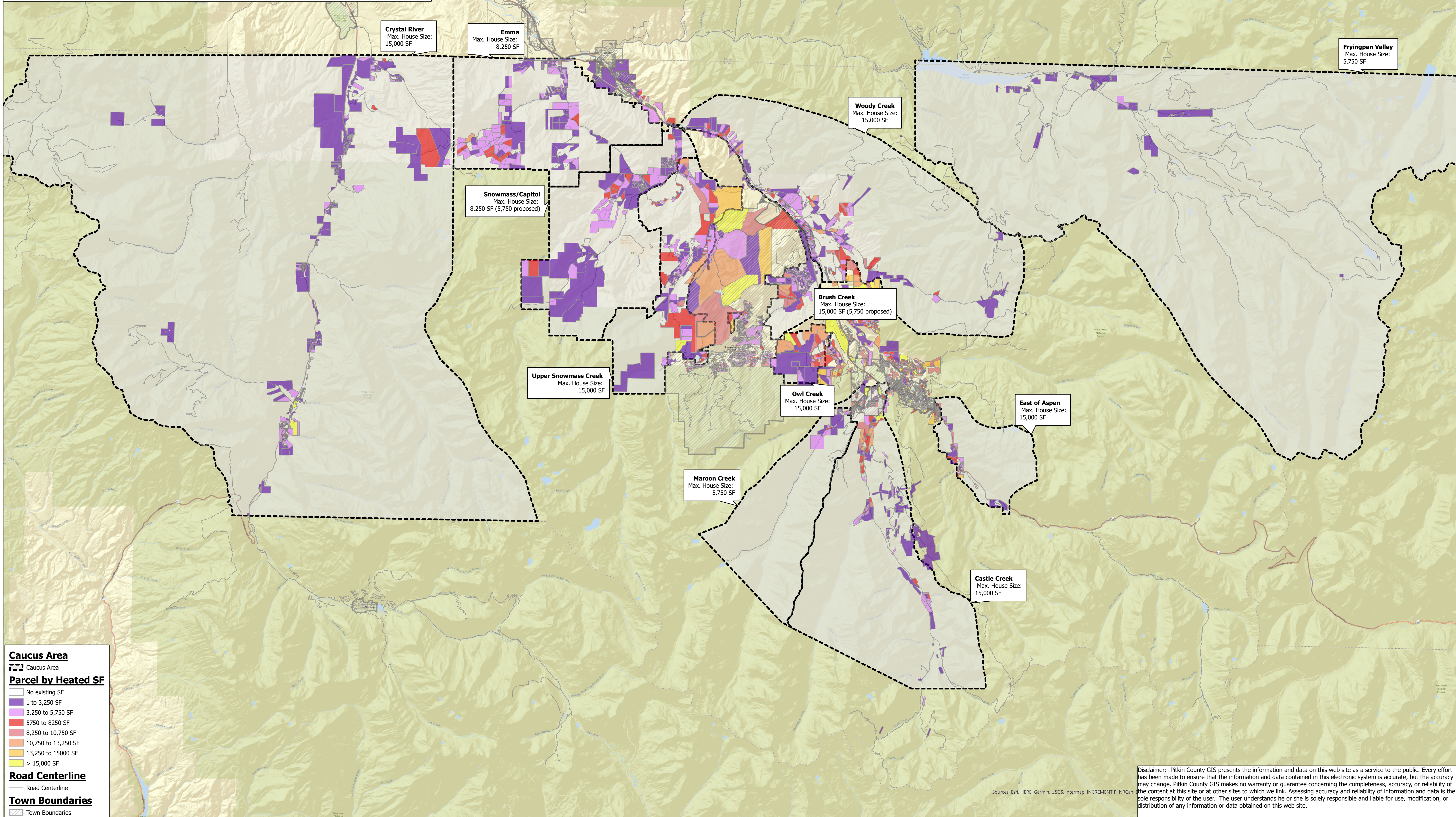


Pitkin County Parcels by Heated Square Footage 2022

This map shows parcels across the entire county, grouped by existing Heated Square Footage (SF). Parcels with zero existing square footage are not displayed. Caucus Area boundaries are included for reference, including a label of the current maximum house size.

Map produced 12/12/2022



Caucus Area
Caucus Area

Parcel by Heated SF

- No existing SF
- 1 to 3,250 SF
- 3,250 to 5,750 SF
- 5,750 to 8,250 SF
- 8,250 to 10,750 SF
- 10,750 to 13,250 SF
- 13,250 to 15,000 SF
- > 15,000 SF

Road Centerline
Road Centerline

Town Boundaries
Town Boundaries

Disclaimer: Pitkin County GIS presents the information and data on this web site as a service to the public. Every effort has been made to ensure that the information and data contained in this electronic system is accurate, but the accuracy may change. Pitkin County GIS makes no warranty or guarantee concerning the completeness, accuracy, or reliability of the content at this site or at other sites to which we link. Assessing accuracy and reliability of information and data is the sole responsibility of the user. The user understands he or she is solely responsible and liable for use, modification, or distribution of any information or data obtained on this web site.

Sources: Esri, HERE, Garmin, USGS, Intermap, INCREMENT P, NRCan, etc.