



Braderich Creek Prescribed fire: Information and Frequently Asked Questions (FAQs)

The U.S. Forest Service is planning to conduct a prescribed fire in the Braderich Creek area this spring. The prescribed fire is part of the Aspen-Sopris Wildlife Habitat Improvement Project and seeks to improve habitat across the landscape for elk, mule deer, and other native wildlife.

Where, when and how long will the burn occur?

Where: See the attached map. Prescribed fire will be ignited across some 2,000 acres in targeted blocks of aspen and shrub vegetation that is decadent, of poor condition, and degraded forage value.

When: A prescribed fire is a planned event. The project will be implemented when conditions are ideal for a safe and effective prescribed fire. Conditions are considered suitable when the snow has sufficiently melted off the target area and other surrounding areas still retain moisture and snow. These conditions typically occur in April or early May. Other environmental factors such as wind, temperature, and relative humidity are key elements to a successful controlled ignition. If conditions are not favorable, the project will be delayed.

Duration: Ignition will take place over a 1-3 day period. During this time, ignition operations typically last 6-8 hours per day. Once ignition operations cease, crews will remain to monitor and contain fire spread.

What to expect during the prescribed fire?

Signs will be posted prior to the event. On the days of the burn please do not call 911 if you see flames or smoke in this area. There may be large volumes of smoke visible at times and people may even see flames. You can expect to see fire engines and crews, and possibly a helicopter over the fire. Personnel will be posted for public safety. Little to no fire will be visible overnight.

Recreation and trail use: For your own safety, please refrain from recreating in the area until it is declared safe. Updates will be available at the White River National Forest Twitter account @WhiteRiverNews, the White River National Forest website: <http://www.fs.usda.gov/whiteriver>, or by calling the Aspen-Sopris Ranger District at (970) 963-2266.

Smoke: Prior to burning, a smoke permit is obtained through the State of Colorado, Air Pollution Control Division. A project objective is to minimize smoke impacts on surrounding communities. *If you have a smoke sensitivity, please contact the District office at (970) 963-2266 so that we can keep you informed of smoke conditions. Prescribed fire smoke may affect your health. For more information, please visit: <https://www.colorado.gov/pacific/cdphe/wood-smoke-and-health>.*

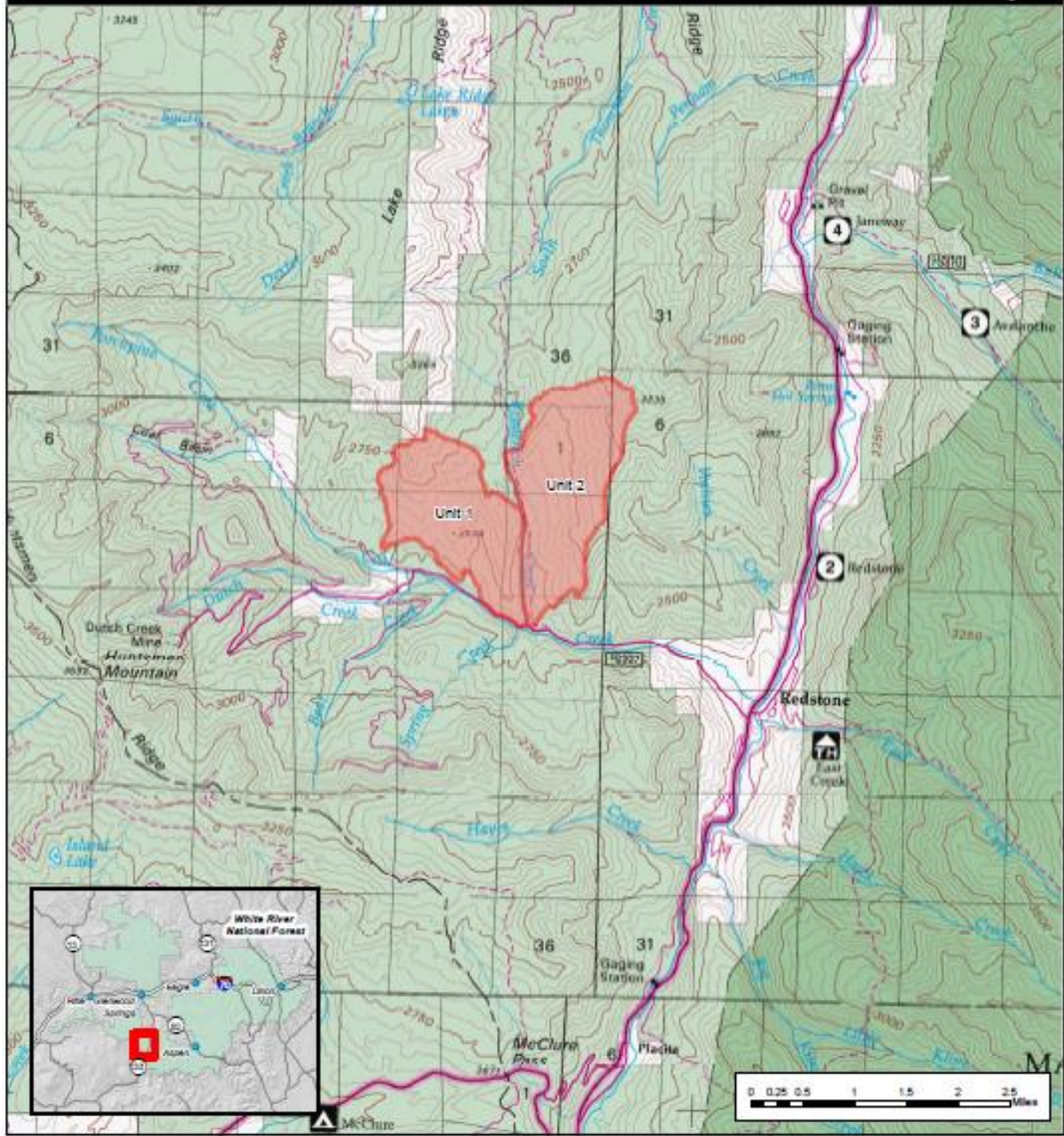
Drones: Are illegal around fire operations. They are a threat to firefighter and public safety. **NO Drone Zone.**

Where can I get more information and sign up for alerts?

- Real-time updates will be available on Twitter @WhiteRiverNews or @UCRFireCenter, and the WRNF facebook page
- Aspen-Sopris Ranger District at (970) 963-2266
- Garfield and Eagle County Alert Systems: The Garfield and Eagle County alerts systems will provide information during the prescribed fire. Visit: Garfield County: <http://garco911.org/>.



Braderich Rx Burn Vicinity Map



Date: 3/30/2018

No warranty is made by the Bureau of Land Management as to the accuracy, reliability, or completeness of these data. Original data were compiled from various sources. This information may not meet National Map Accuracy Standards. This project was developed through digital means and may be updated without notice.

Document Path: T:\DCGIS\glwork\corfm\projects\fire\uels_projects\central_zone\braderich_creek\project\braderich_rx_plic_map.mxd

Legend

- Burn Units - 2,000 acres