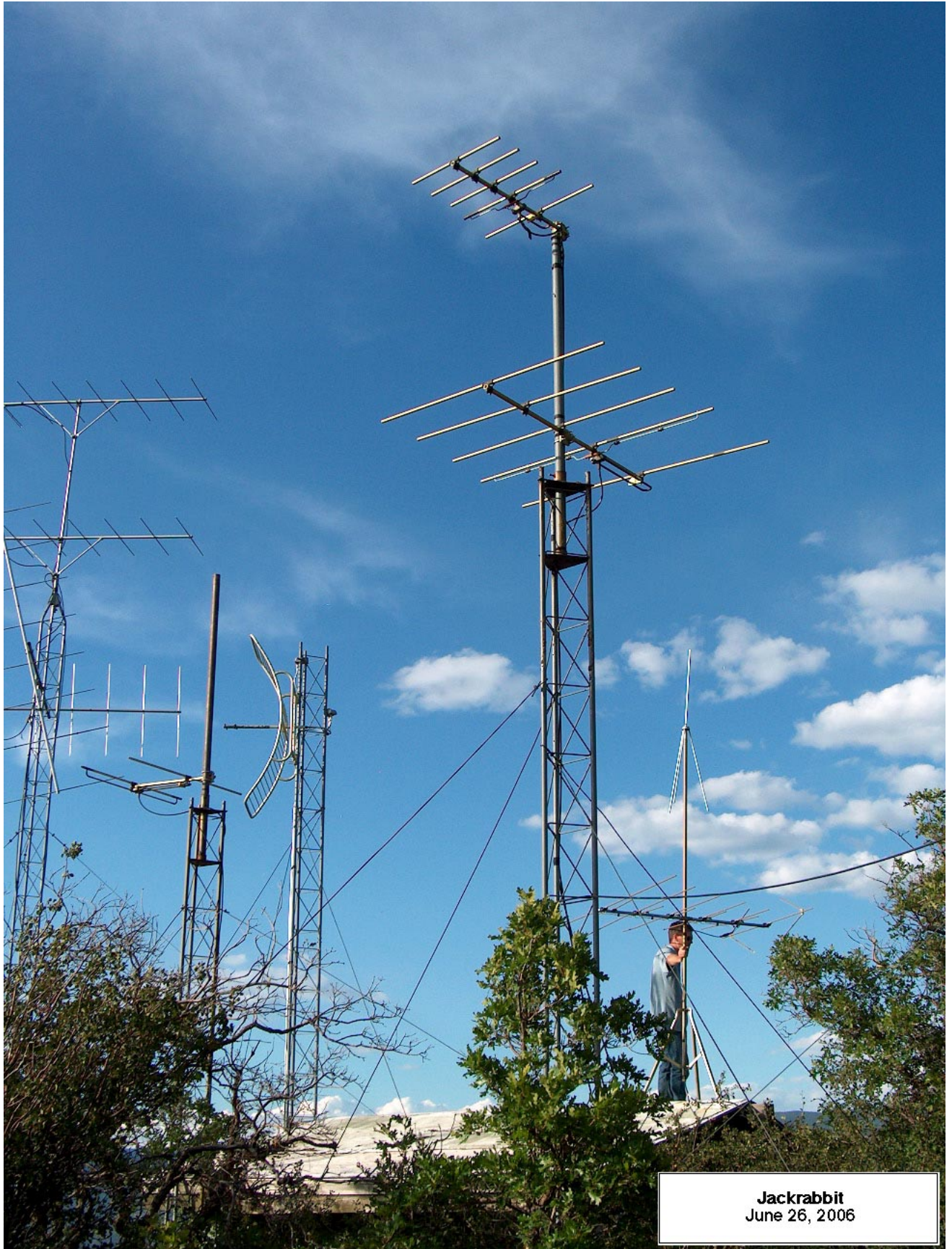
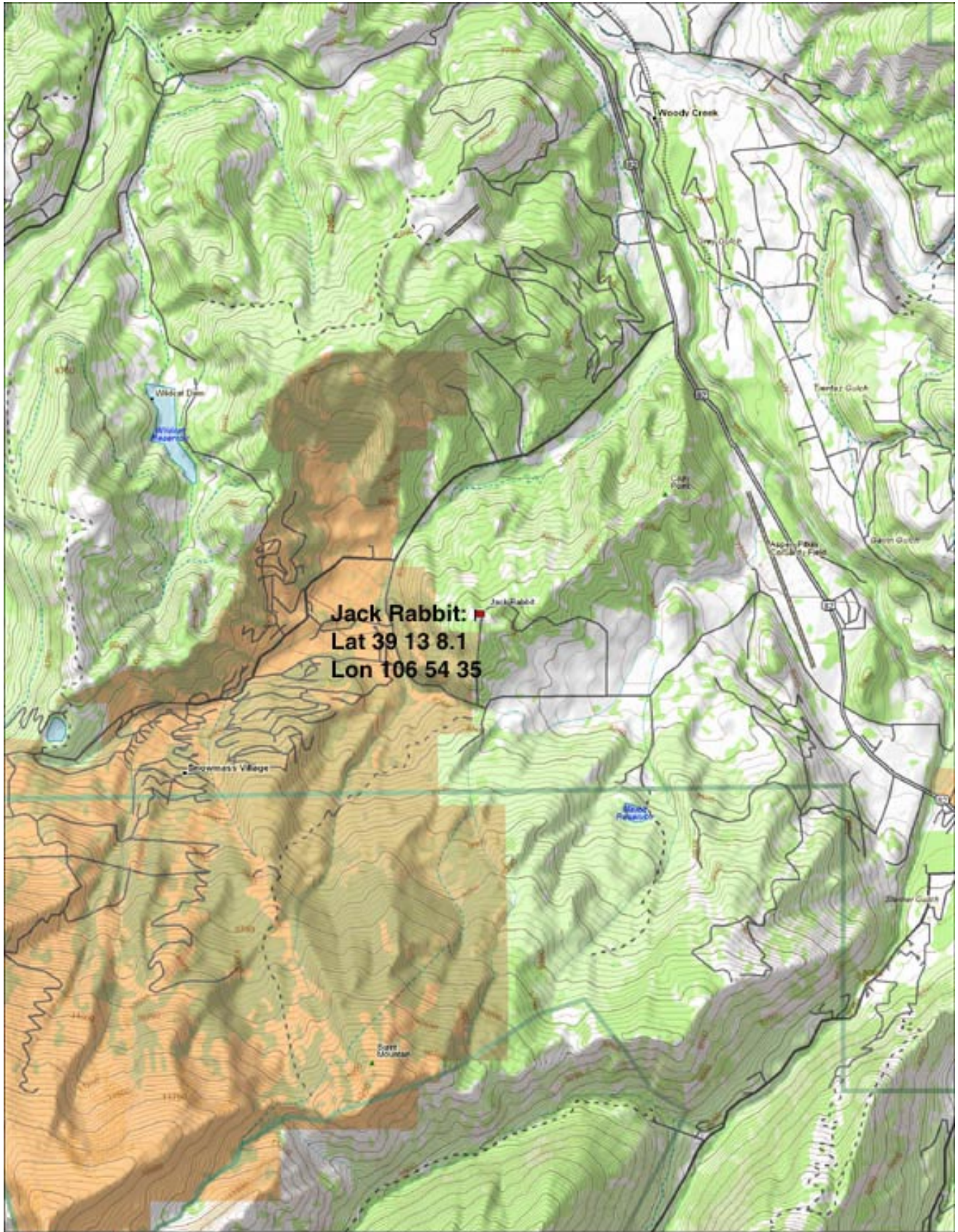


Appendix A.4 - Jack Rabbit

(This site had just one FM translator as of 6/30/06)



Jackrabbit
June 26, 2006



Jack Rabbit: 
Lat 39 13 8.1
Lon 106 54 35



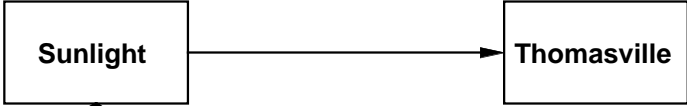
© 2002 DeLorme, Topo USA. All Data copyright of content owner.
www.delorme.com



Sunlight

Call Sign	Freq. in	Freq. out	Donor
K207DT (KDNK)	88.1	89.3	Sunlight
K240AB (KJYE)	92.3	95.9	Black Ridge
K265CS (KMGJ)	93.1	100.9	Black Ridge
K247AD (KSPN)	103.1	97.3	Lower Red
K235AN (KSNO)	103.9	94.9	NE of Snowmass Village
K232AD (KNFO)	106.1	94.3	Williams Broadcast Site

Red Hill



Thomasville

Call Sign	Freq. in	Freq. out.	Donor
K235AP (KDNK)	88.1	94.9	Sunlight
K215BC (KCJX)	88.9	90.9	Sunlight
K229AI (KVOV)	90.5	93.7	Sunlight
K246AH (KKCH)	92.7	97.1	Sunlight
K242AV (KNFO)	94.3	96.3	Sunlight Trans.
K251AK (KJYE)	95.9	98.1	Sunlight Trans. silent

Lower Red

Elephant

Elephant

Call Sign	Freq. in	Freq. out	Donor
K203EH (KDNK)	88.1	88.5	Sunlight
K215BD (KCJX)	88.9	90.9	Sunlight
K230AG (KVOV)	90.5	93.9	Sunlight
K236AN (KNFO)	94.3	95.1	Sunlight Trans.
K278BD (KSNO)	94.9	103.5	Sunlight Trans.
K272DB (KJYE)	95.9	102.3	Sunlight Trans.
K252CU (KSPN)	97.3	98.3	Sunlight Trans.

Crown

Crown

Call Sign	Freq. in	Freq. out	Donor
K211EX (KCJX)	88.9	90.1	Sunlight
K222AN (KVOV)	90.5	92.3	Sunlight
K203EG (KDNK)	94.7	88.5	Williams Trans.
K272AM (KJYE)	95.9	102.3	Sunlight Trans.
K261AK (KSPN)	103.1	100.1	Lower Red
K278AG (KSNO)	103.9	103.5	NE of Snowmass Village

Upper Red

Upper Red

Call Sign	Freq. in	Freq. out	Donor
K268BJ (KVOV)	90.5	101.5	Sunlight
K216BF (KAJX)	91.5	91.1	Smuggler Mt.
K210BO (KLXV)	91.9	89.9	Sunlight
K202AT (KDNK)	94.7	88.3	Williams Trans.
K274AT (KRVG)	95.5	102.7	Sunlight

Williams

Williams

Call Sign	Freq. in	Freq. out	Donor
K234BJ (KDNK)	88.1	94.7	Sunlight
K230AN (KVOV)	90.5	93.9	Sunlight
K209EY (KAJX)	91.5	89.7	Smuggler Mt.
K288FV (KJYE)	95.9	105.5	Sunlight Trans.

Jack Rabbit


Jackrabbit

Call Sign	Freq. in	Freq. out.	Donor
K215AC (KAJX)	91.5	90.9	Smuggler Mt.

Loges

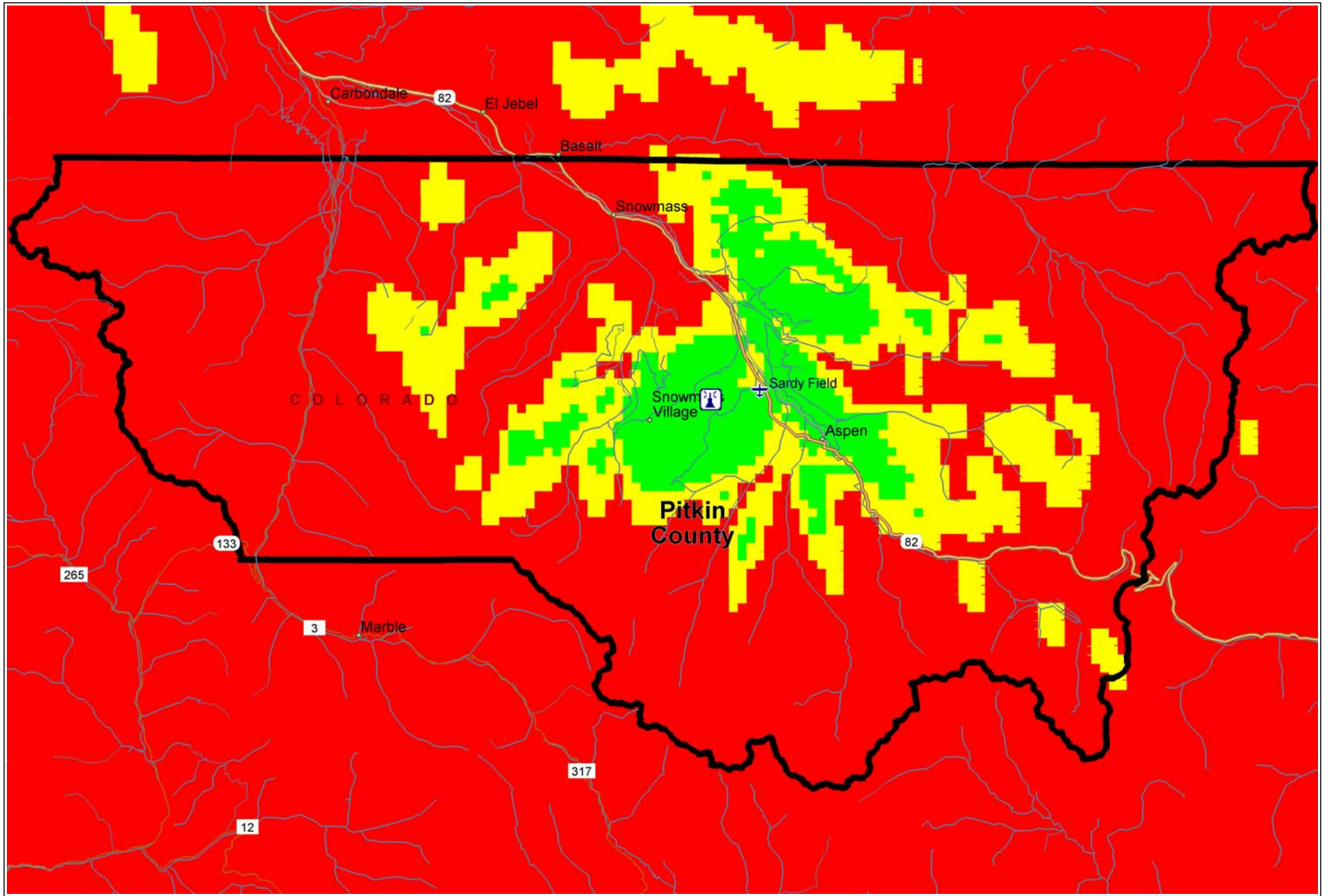
- Notes:**
1. Some signals are translated twice
 2. Loges and Red Hill are Inactive
 3. Lower Red is TV only
 4. Arrows indicate path between translators

FM System Diagram
 (As of 10/6/06)

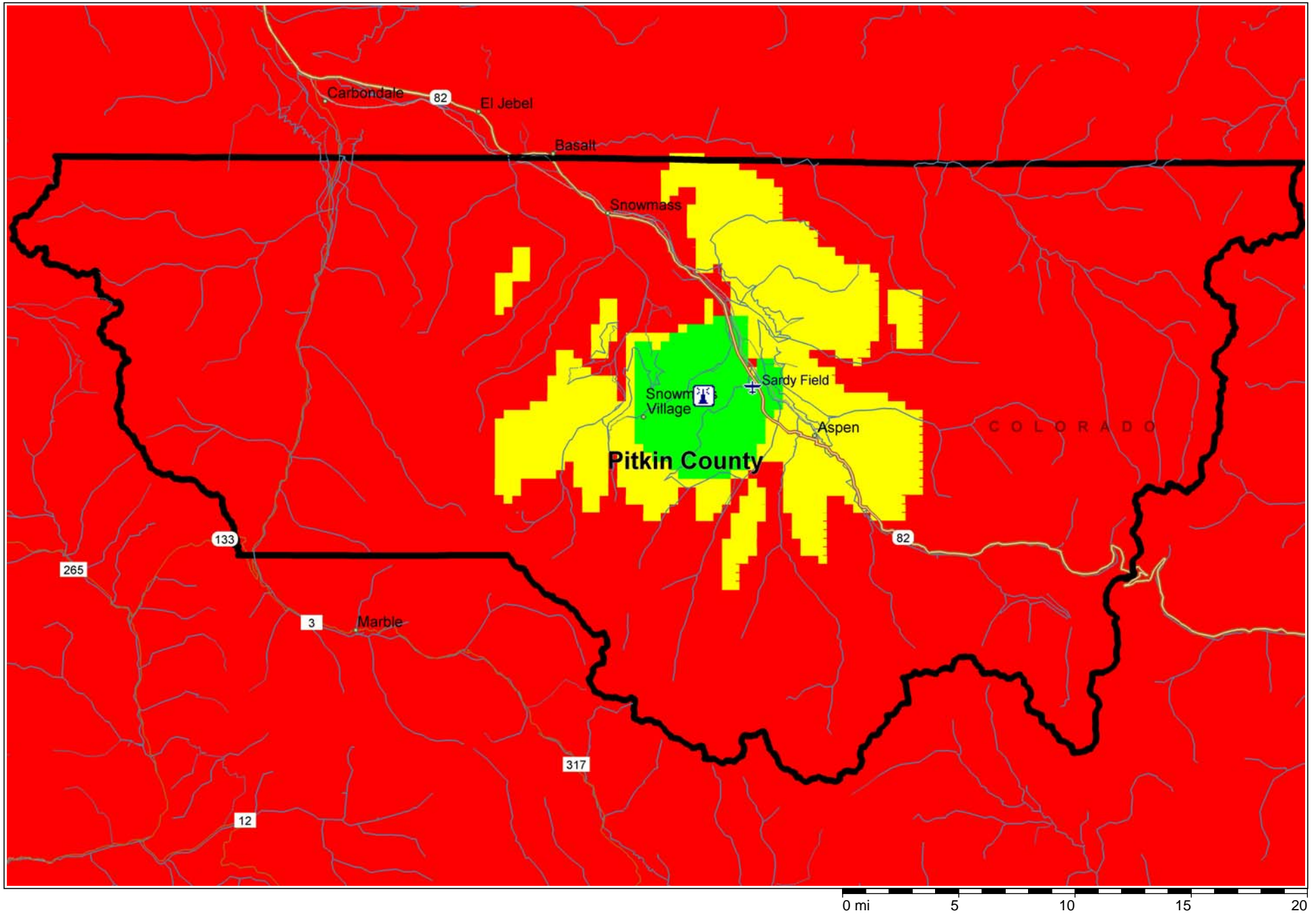


Pericle Communications Company

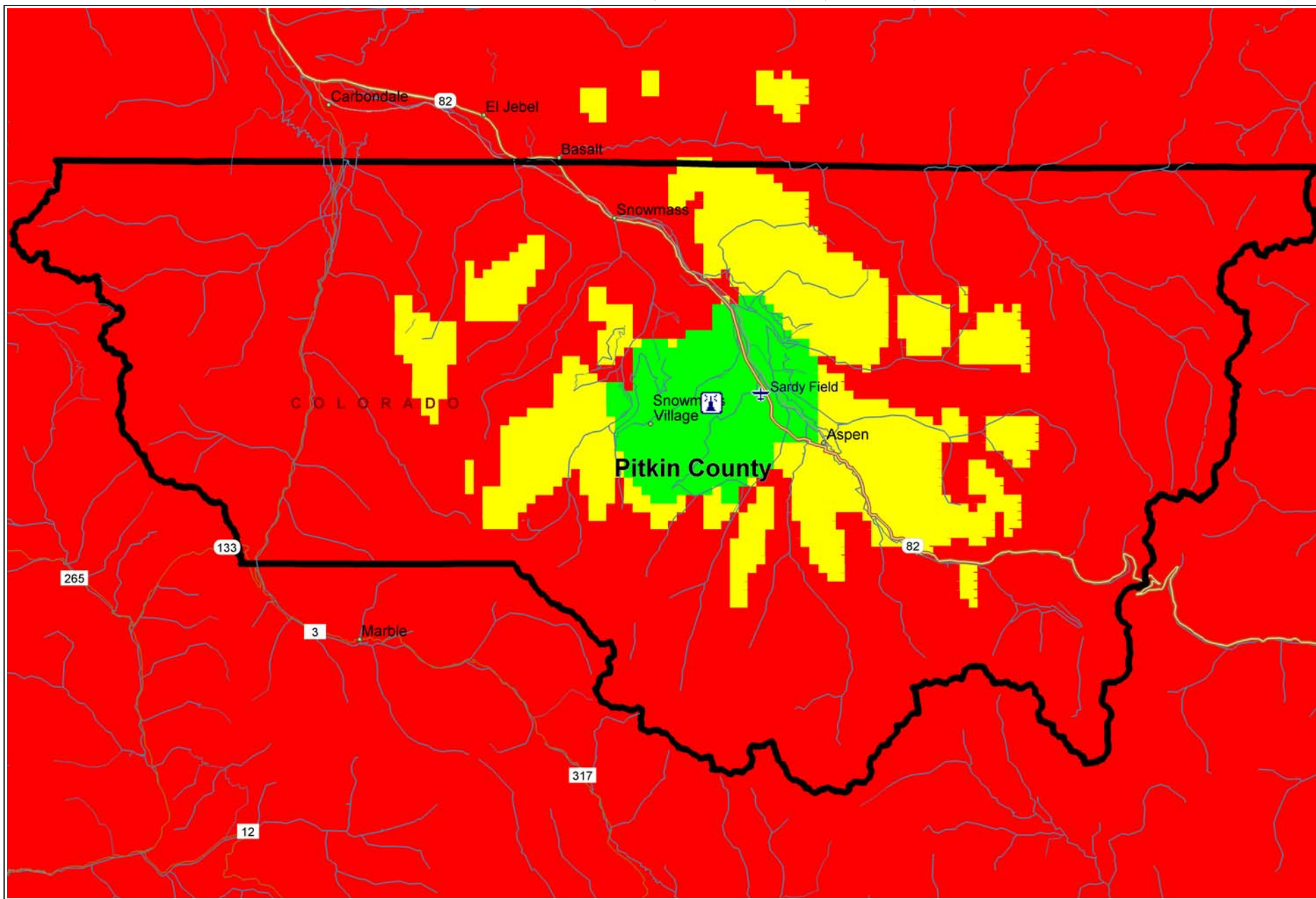
Jack Rabbit FM: 40, 50 dBu = Red, Yellow, Green



Jack Rabbit VHF-TV: 60, 70 dBu = Red, Yellow, Green



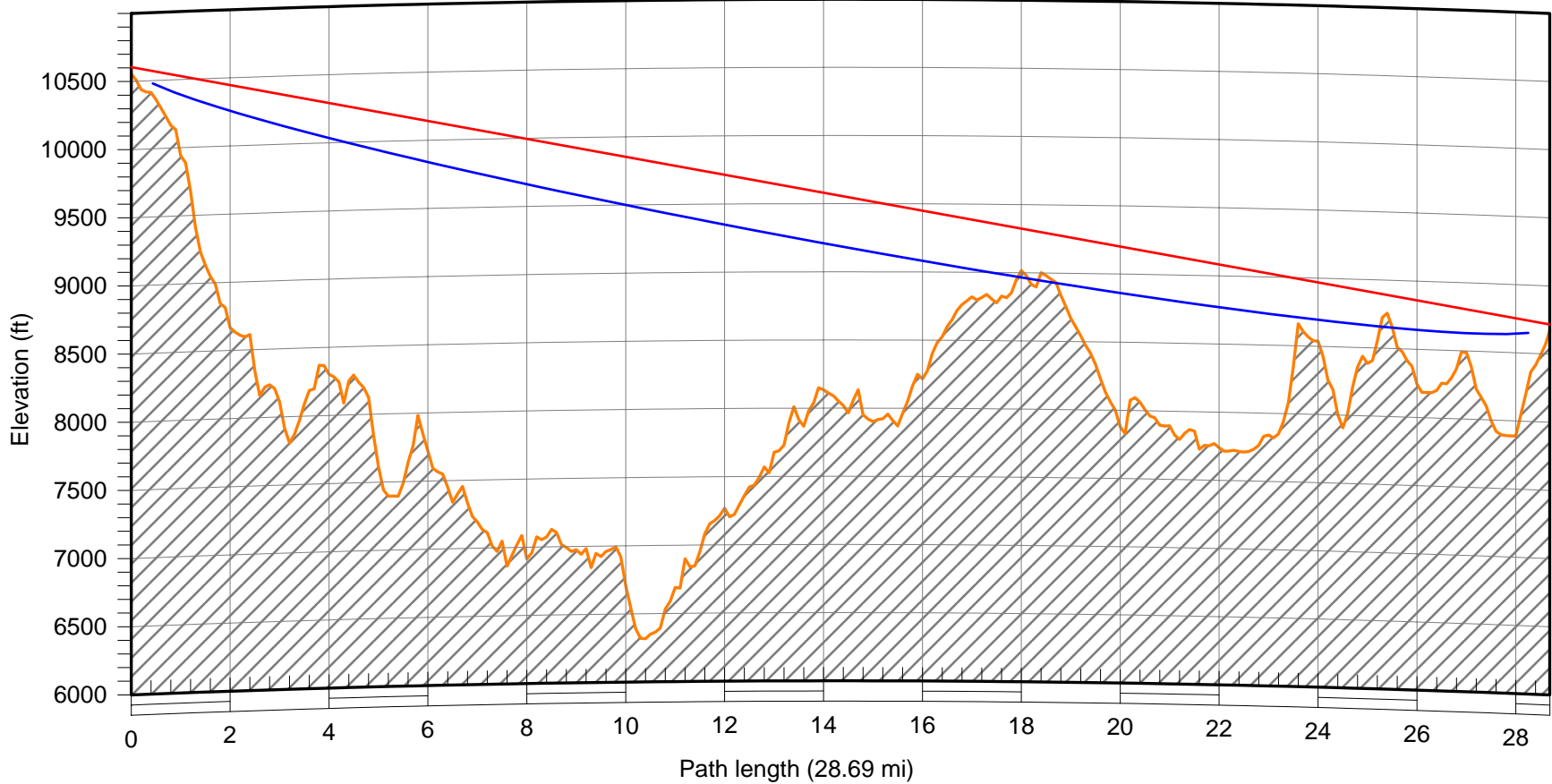
Jack Rabbit UHF-TV: 60, 70 dBu = Red, Yellow, Green



Sunlight
 Latitude 39 25 23.00 N
 Longitude 107 22 34.00 W
 Azimuth 119.26°
 Elevation 10555 ft ASL
 Antenna CL 49.9 ft AGL

Frequency (MHz) = 98.0
 K = 1.33
 %F1 = 60.00

Jack Rabbit
 Latitude 39 13 08.00 N
 Longitude 106 54 35.00 W
 Azimuth 299.55°
 Elevation 8677 ft ASL
 Antenna CL 40.0 ft AGL



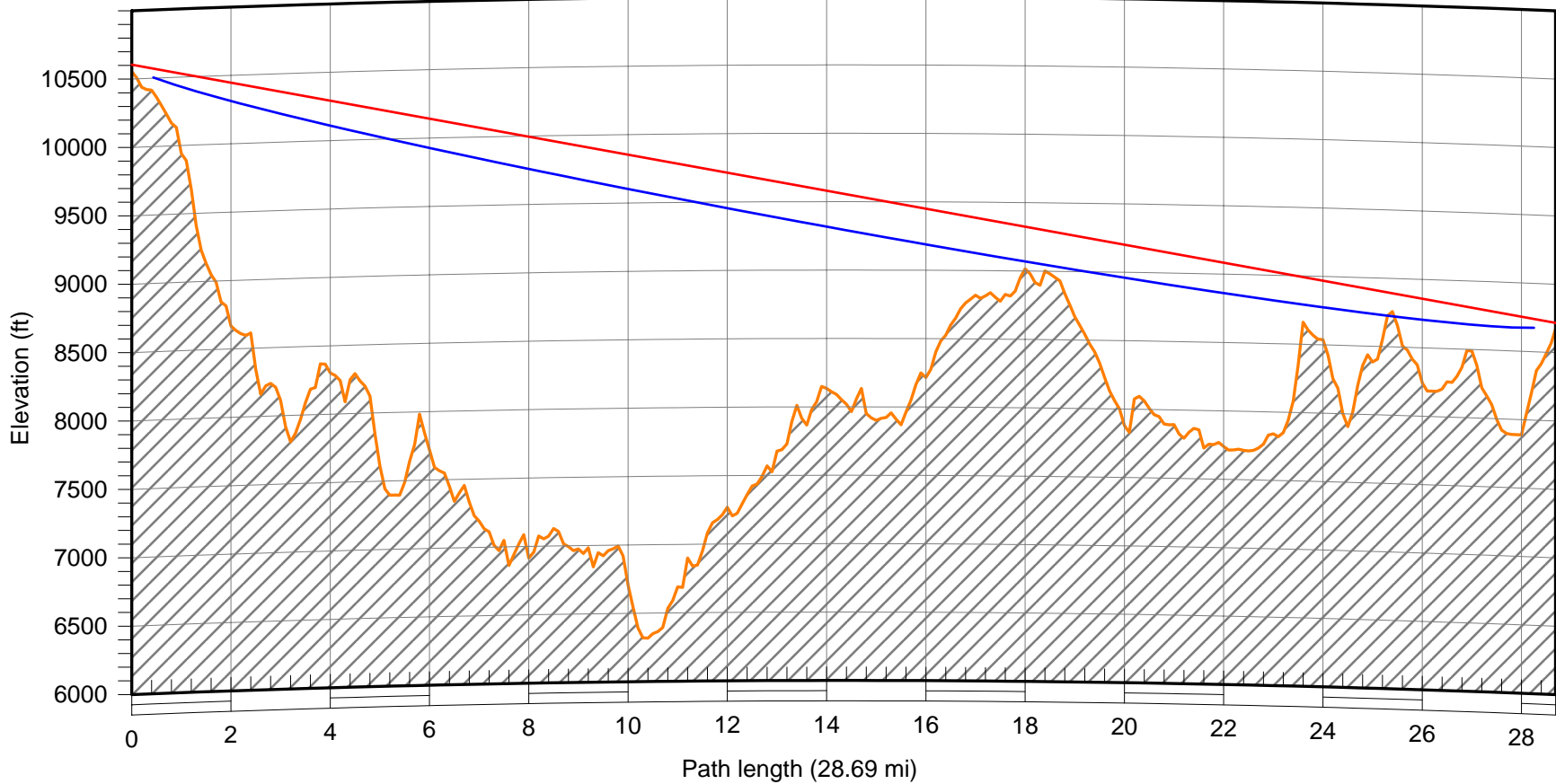
Pericle Communications Company

	Sep 01 06	

Sunlight
 Latitude 39 25 23.00 N
 Longitude 107 22 34.00 W
 Azimuth 119.26°
 Elevation 10555 ft ASL
 Antenna CL 49.9 ft AGL

Frequency (MHz) = 195.0
 K = 1.33
 %F1 = 60.00

Jack Rabbit
 Latitude 39 13 08.00 N
 Longitude 106 54 35.00 W
 Azimuth 299.55°
 Elevation 8677 ft ASL
 Antenna CL 40.0 ft AGL



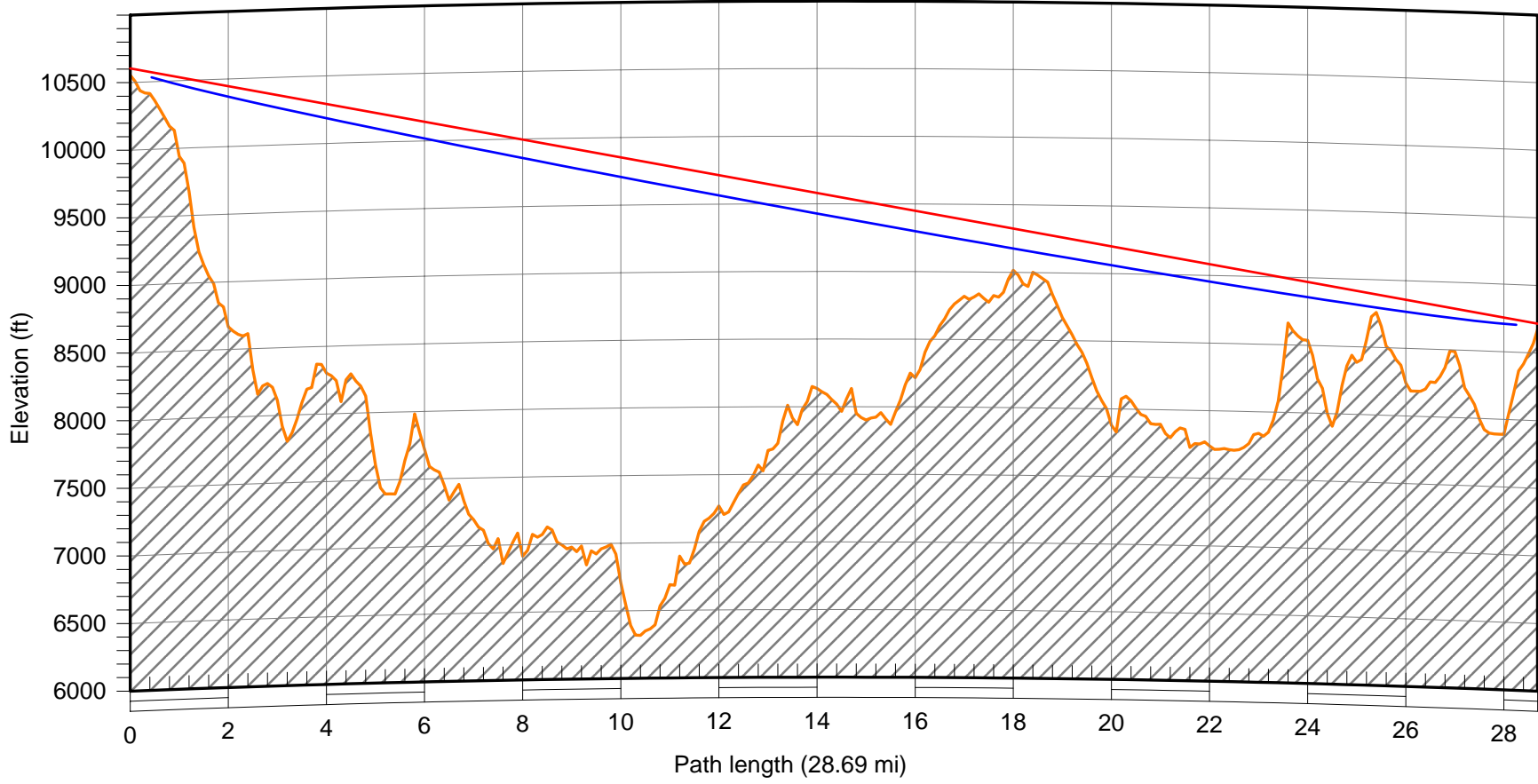
Pericle Communications Company

	Sep 01 06	

Sunlight
 Latitude 39 25 23.00 N
 Longitude 107 22 34.00 W
 Azimuth 119.26°
 Elevation 10555 ft ASL
 Antenna CL 49.9 ft AGL

Frequency (MHz) = 584.0
 K = 1.33
 %F1 = 60.00

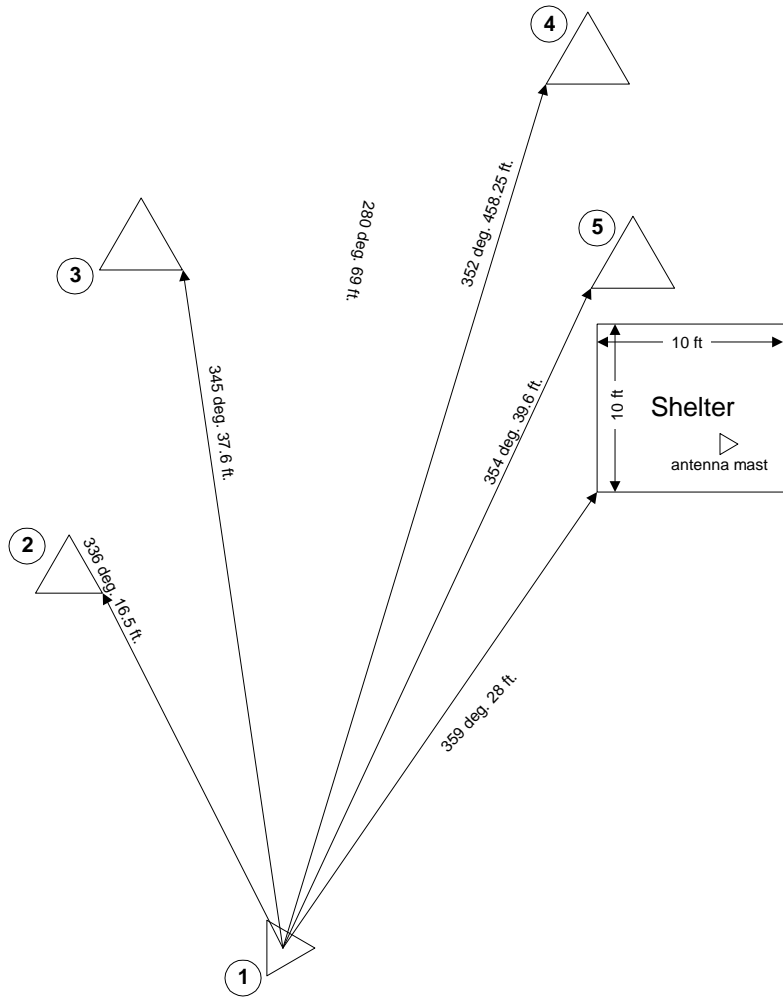
Jack Rabbit
 Latitude 39 13 08.00 N
 Longitude 106 54 35.00 W
 Azimuth 299.55°
 Elevation 8677 ft ASL
 Antenna CL 40.0 ft AGL



Pericle Communications Company

	Sep 01 06	
--	-----------	--





Site Diagram Jack Rabbit



Pericle Communications Company

FMV 88-108
22.5 Feet
235 deg

First Joint
9 Feet

Tower Coordinates:
N 39 13 8.1
W 106 54 35
+/- 14 ft

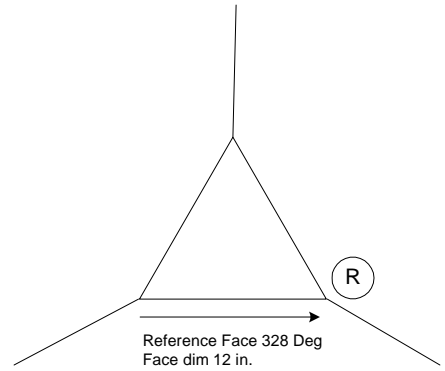
(R)

Tower Foundation
Concrete
30 in. square

CA5
22.5 Feet
241 deg

Top of Tower
18 Feet

FMV 88-108
10 Feet
145 deg



Jack Rabbit Tower 1

Jack Rabbit Tower 1.vsd



Pericle Communications Company

CA5
18 Feet
254 deg

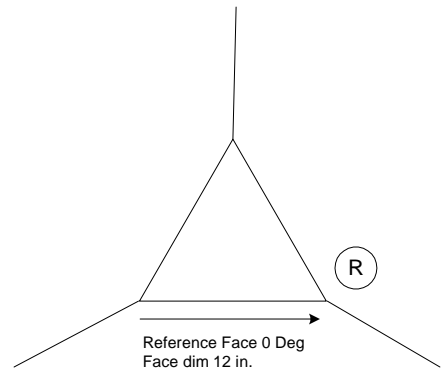
First Joint
9 Feet

CA5 HF
22.5 Feet
270 deg

Top of Tower
18 Feet
328 deg

Tower Foundation
Concrete
29 in. square

Tower Coordinates:
N 39 13 8.3
W 106 54 35.1
+/- 15 ft



Jack Rabbit Tower 2

Jack Rabbit Tower 2.vsd

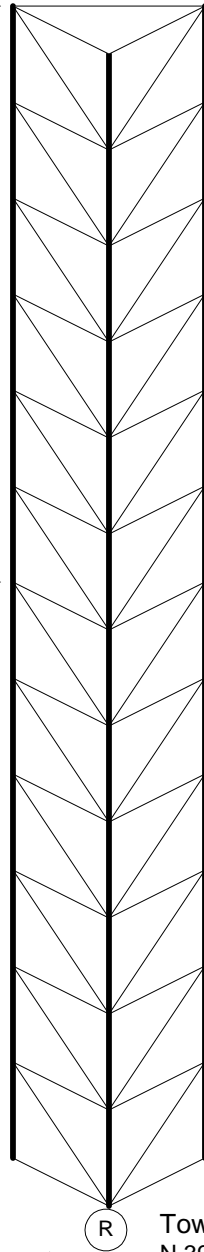


Pericle Communications Company

Kathrien Model CA2-FM/50N
18 Feet
316 deg

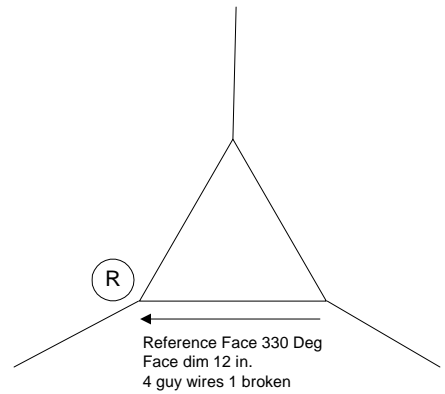
Top of Tower
18 Feet

First Joint
9 Feet



Tower Foundation
Concrete
27 in. square

Tower Coordinates:
N 39 13 8.5
W 106 54 35.1
+/- 11 ft



Jack Rabbit Tower 3

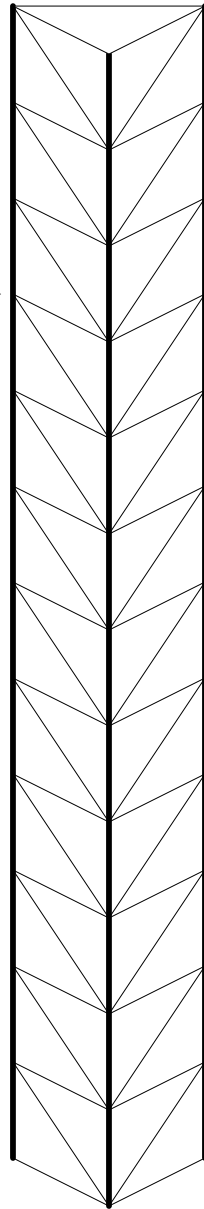
Jack Rabbit Tower 3.vsd



Pericle Communications Company

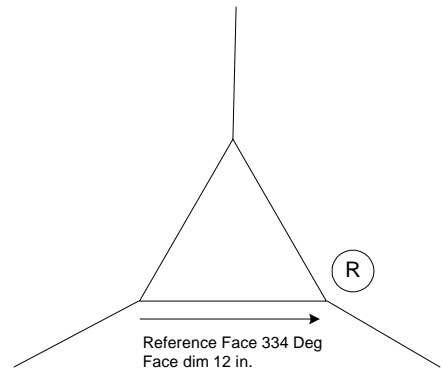
Scala PR450V (C1150)
22 Feet
302 deg

Top of Tower
24 Feet



Tower Foundation
Concrete
28 in. square

Tower Coordinates:
N 39 13 8.7
W 106 54 35.1
+/- 11 ft

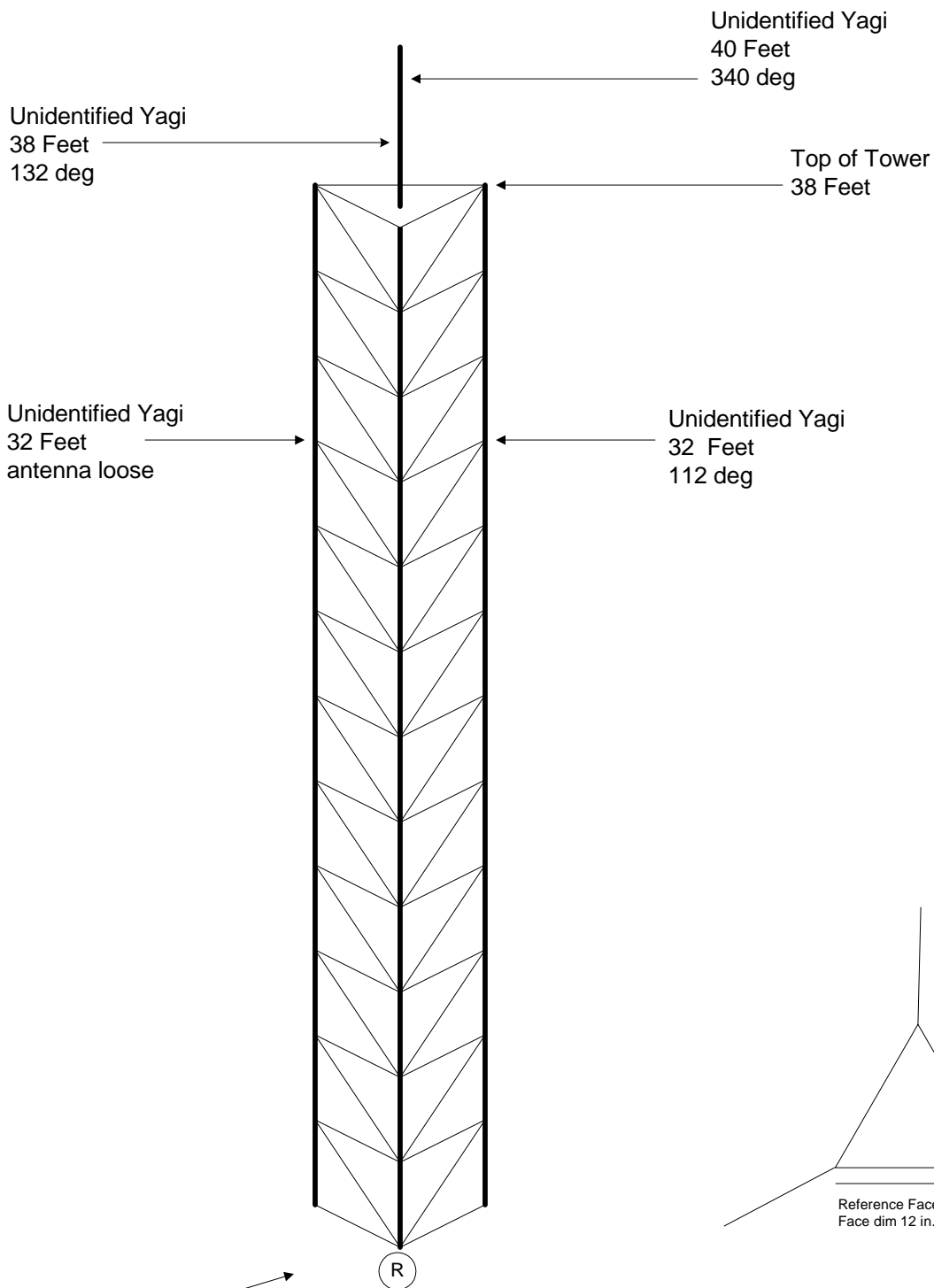


Jack Rabbit Tower 4

Jack Rabbit Tower 4.vsd

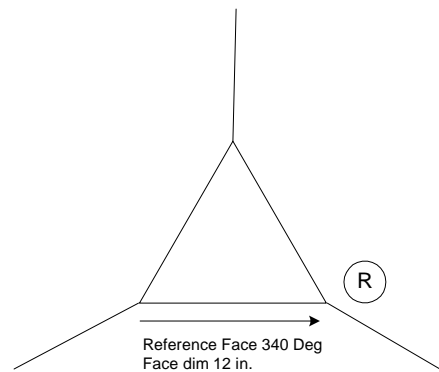


Pericle Communications Company



Tower Foundation
Concrete
24 in. square

Tower Coordinates:
N 39 13 8.7
W 106 54 35.1
+/- 8 ft



Jack Rabbit Tower 5

Jack Rabbit Tower 5.vsd



