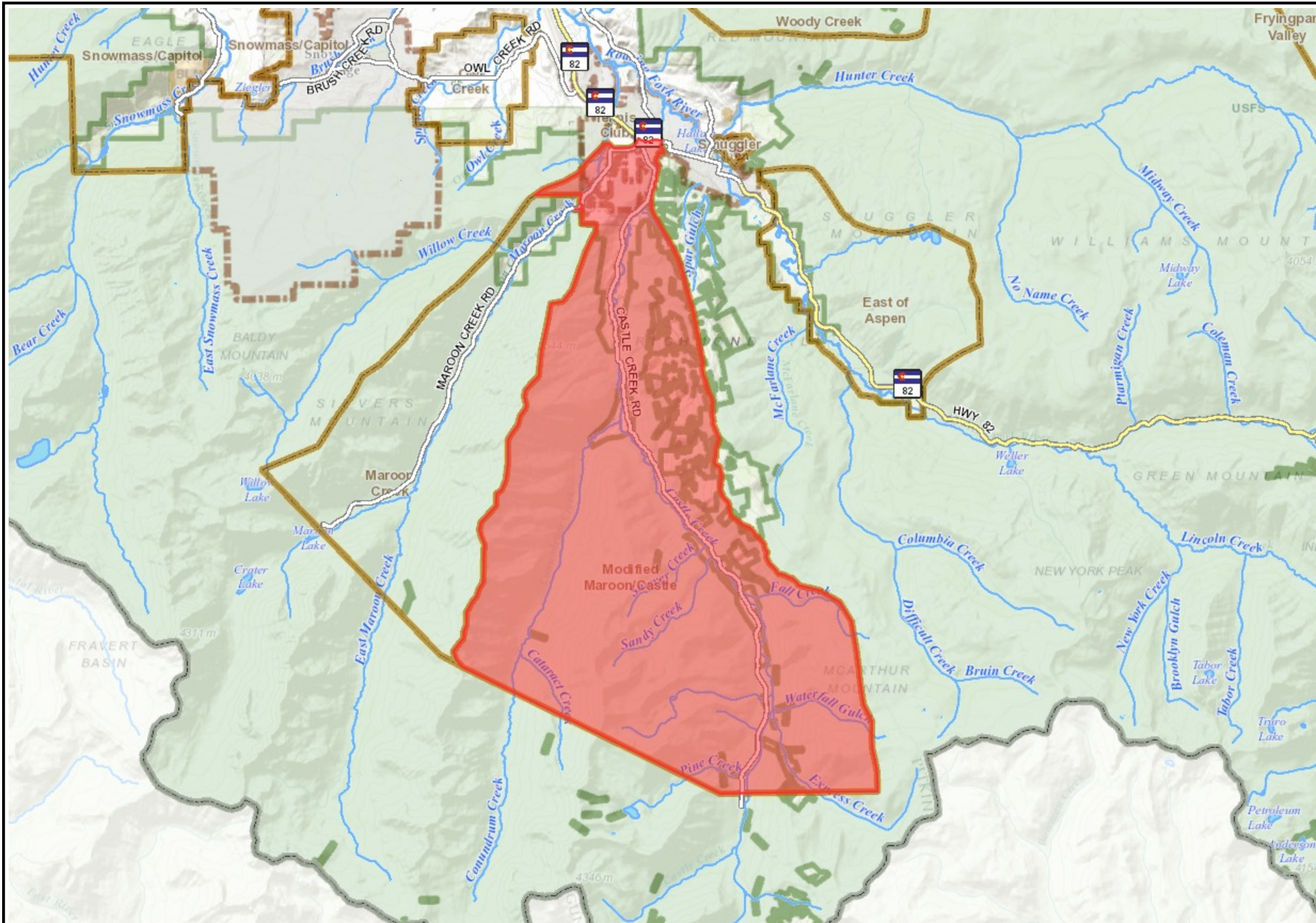




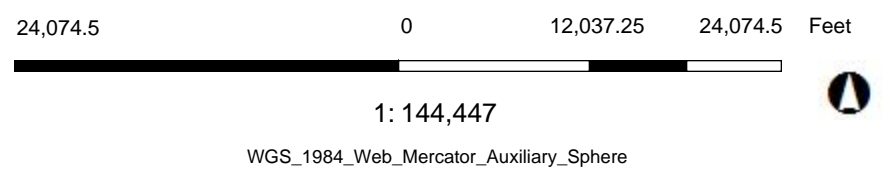
# Modified Maroon & Castle Caucus



**Legend**

- State Highway
- Road Centerline 144K
- County Line
- Out of County
- Caucus Area
- Rivers and Creeks**
  - Continuous
  - Intermittent
- River, Lake or Pond
- Town Boundary
- Federal Land Boundary**
  - BLM
  - State of Colorado
  - USFS

**Notes**



THIS MAP IS FOR INFORMATIONAL PURPOSES. Pitkin County GIS makes no warranty or guarantee concerning the completeness, accuracy, or reliability of the content represented.

Map Created on 3:41 PM 03/03/16 at <http://www.pitkinmapsandmore.com>

